



1P Series

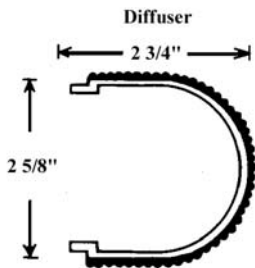
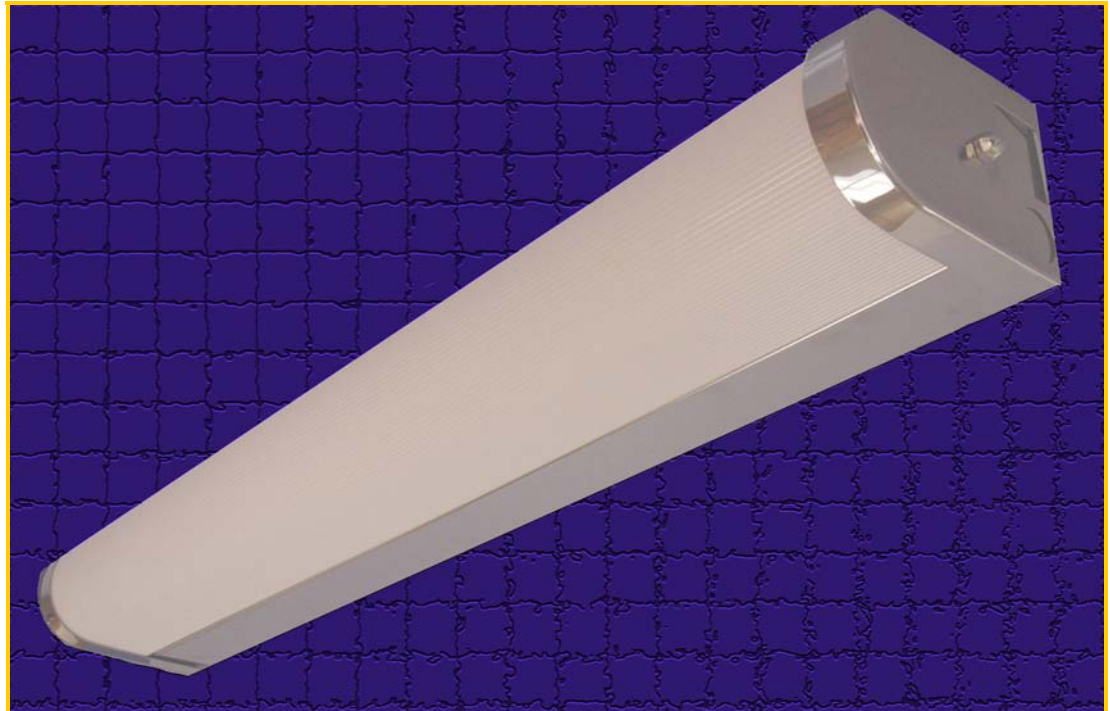
Chrome Covered Bathroom Wall Unit

Application: This covered chrome channel can be mounted both vertically and horizontally and comes in a variety of sizes for a wide range of uses. It is ideal for use in bathrooms, kitchens, powder rooms, under cabinets, or any area where high quality and low cost lighting is preferred.

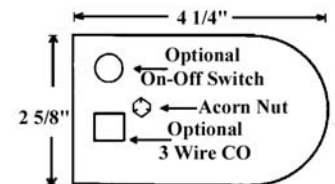
Construction: Housing is designed from heavy gauge die formed steel and plated in a high polished chrome for high grade appearance. Off and on switch is standard in end plate. Snap in grounded convenience outlet is available upon request. End plates are secured to fixture by acorn nuts. Lens is extruded white acrylic.

Electrical: All units are furnished with UL Listed Class P thermally protected ballast. Other voltages are available upon request. Fixtures meet requirements for UL Luminaire Standard # 1598. All units comply with National Energy Standards.

Mounting: Holes and knockouts are provided in units for surface or wall mounting either vertically or horizontally.



Fixture Length		
T12	T8	Length
F14T12	---	15 1/2"
F15T12	---	18 1/2"
F20T12	F17T8	24 1/2"
F30T12	F25T8	36 1/2"
F40T12	F32T8	48 1/2"



Maximum Weight = 10 lbs. / 48"

Ordering Information

Specifications Subject To Change without Notice

Model	# Lamps	Lamp Type		Ballast	Voltage	Options
1P-		32		E		
1P	1 = One	T8 Lamps 17 = F17T8 25 = F25T8 32 = F32T8	T12 Lamps 15 = F15T12 20 = F20T12 30 = F30T12 40 = F40T12	M = Magnetic E = Electronic .88 BF	Blank = 120V 277 = 277 V MV = Multi Volt	O = Grounded Outlet TOG = Toggle Switch ROC = Rocker Switch PULL = Pull Switch EMB = Emergency Ballast

