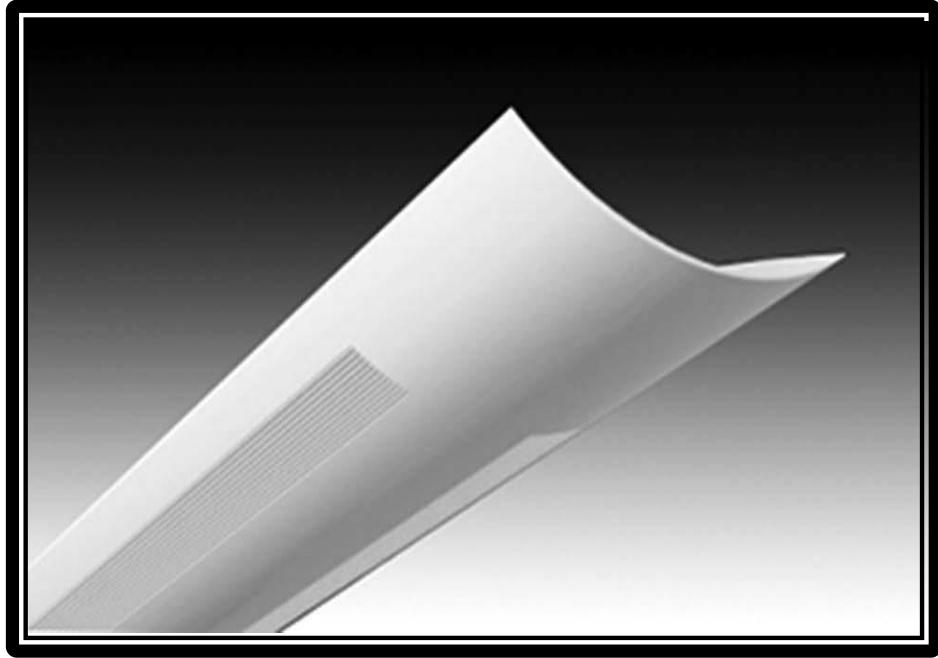


PENDANT MOUNT



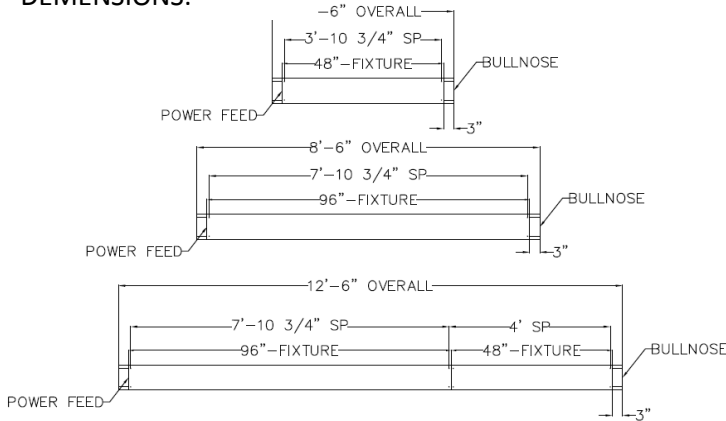
Application: Specification grade, suspended, high performance architectural luminaire. For use in indoor applications where a T8, T5, T5HO direct/indirect luminaire with maximum uplight as well as glare-free downlight is required. Available as individual fixtures or with end and intermediate units for mounting in continuous rows. Fixtures designed to mount on 4 foot and 8 foot centers.

Construction: Durable cold rolled 20 ga. steel body. Sufficient knock-outs provided for connections and through wiring. Fixture is 2 inches in height. white powder coated finish

Optics: 95% enhanced anodized aluminum slotted reflector and semi-perforated housing.

Light Distribution: 92% Indirect
8% Direct

DEMENSIONS:



Available with either Spade or Bullnose End cap:



Spade



Bullnose

ORDER EXAMPLE: 850-4FT-232T8-UNV-BE-AC48

Model	Size	# of Lamps	Lamp Type (ALL PER 4FT)	VOLTAGE	OPTIONS	MOUNTING
850	4FT 8FT XFT (continuous row mounting)	LED	42W (4100LMN) 38.5W (3475 LMN) 47W (4650 LMN)	120 277 UNV	EM- EMERGENCY PACK EM2-2 LITE EMER PACK DB- DIMMING BALLAST BE- BULLNOSE END SE- SPADE END CAPE	Air Craft Cable (24", 36" 48")