

Chrome Covered Bathroom Wall Unit

Project:	
Type:	
Catalog #:	

STANDARD



This covered chrome channel can be mounted both vertically and horizontally and comes in a variety of sizes for a wide range of uses. It is ideal for use in bathrooms, kitchens, powder rooms, under cabinets, or any area where high quality and low cost lighting is preferred.

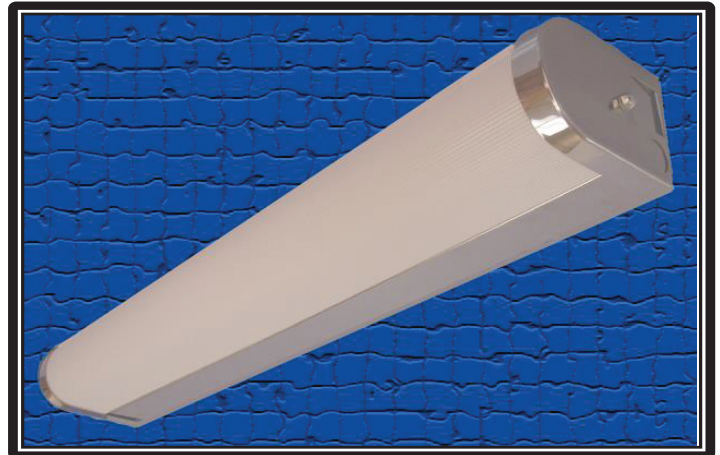
Construction:

- Housing is designed from heavy gauge die formed steel and plated in a high polished chrome for high grade appearance. Off and on switch is standard in end plate. Snap in grounded convenience outlet is available upon request. End plates are secured to fixture by acorn nuts. Lens is extruded white acrylic.

All units are furnished with UL Listed Class P thermally protected ballast. Other voltages are available upon request. Fixtures meet requirements for UL Luminaire Standard # 1598. All units comply with National Energy Standard. All units are UL certified damp location

Mounting

Holes and knockouts are provided in units for surface or wall mounting either vertically or horizontally.



WARRANTY & LISTINGS

- 5-year warranty of all electronics and housing.
- UL Certified for damp location

DIMENSIONS

Fixture Length		
T12	T8	Length
F15T12	---	18 1/2"
F20T12	F17T8	24 1/2"
F30T12	F25T8	36 1/2"
F40T12	F32T8	48 1/2"

Ordering Guide

Max weight = 10lbs / 48"

1P LED

Series

1P LED

Size

18 = 18"
2 = 2FT
3 = 3FT
4 = 4FT

Lumens

2FT
3166 (17W)
4350 (24W)
5470 (31W)
6452 (39W)

Color

3K
35K
4K
5K

Options

O = Grounded Outlet
TOG = Toggle Switch
ROC = Rocker Switch
PULL = Pull Switch
EMB = Emergency Ballast
3WAY = 3 Way system
FR = Frosted lens over LED Boards

*0-10v low voltage dimming standard per fixture

*Higher and custom lumen packages available upon request

*Call Factory for lumen options of 18" and 3FT models

4FT
3220 (17W)
4480 (24W)
5705 (30W)
6910 (37W)
8640 (48W)
11797 (70W)

Specifications Subject To Change Without Notice

K-B Lighting Mfg. Co., Inc

2515 Metropolitan Drive Treose PA 19053

P: (215)953-6663 F: (215)953-6710 E: bkessel@kblighting.com

www.kblighting.com