

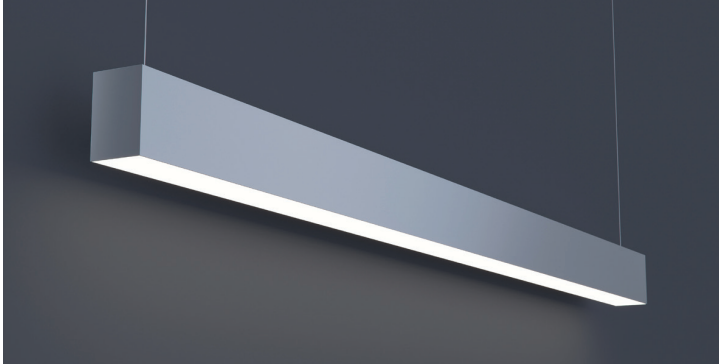
<b>Project:</b>	
<b>Type:</b>	
<b>Catalog #:</b>	

**APPLICATIONS**

A linear 2x3 fixture for distinctive architectural lighting plans. Ideal for corridors, lobbies and office areas, 2x3 Series fixtures can be installed individually or in a continuous run. Specifically designed for direct/indirect lighting with snap-in lens to hide the lamps or LED arrays. Ideal where downlight and uplight are required.

**FEATURES & BENEFITS**

- ◆ Accepts various lenses or louvers.
- ◆ Fixtures can be surface mounted to the ceiling or pendant hung by stem or cable.
- ◆ ETL listed for damp locations
- ◆ CRI 80+



**SPECIFICATIONS**

Die-formed and welded 22 gauge cold rolled steel. Knockouts on ends allow continuous wireway mounting. Housing is specially designed for direct/indirect lighting with separating lamps compartments for each. Fixture accepts various lenses or louvers. 4' and 8' units have a steel mullion to join two individual diffusers. Snap in lens is ideal for uplight.

**ORDERING DATA**

**EXAMPLE: L23PMW48LED45DMVWH40**

		LED							
Series	Length	Gear	LED Module Distribution			Finish	Color Temp	Configuration	
<b>SPR23W</b> Wall Mount	<b>48</b> 48 inch	<b>LED</b>	<b>Blank</b>	Downlight (std)		<b>WH</b> White	<b>30</b> 3000K	<b>Blank</b>	Individual
<b>SPR23P</b> Pendant Mount <b>L23S*</b> Surface Mount	<b>96</b> 96 inch		<b>U</b>	Uplight		<b>BK</b> Black	<b>35</b> 3500K	<b>-B</b>	Beginner Run
<b>SPR23R*</b> Regular Recessed Lay-in For Dropped Ceilings			<b>1U2D</b>	Uplight & Downlight		<b>SI</b> Silver	<b>40</b> 4000K	<b>-E</b>	Ender Run
<b>SPR23RR*</b> Recessed w/ 1/2" Flange To Sit Behind Drywall (For Before Drywall Installation)							<b>50</b> 5000K	<b>-J</b>	Joiner
<b>SPR23RF*</b> Flange To Sit On Surface Of Drywall (For Existing Drywall Installation.)									
*Downlight Only									
		<b>Lens Material</b>		<b>Wattage &amp; Lumen</b>		<b>Driver &amp; Voltage</b>			
		Matte white lens (std)		<b>Up or Down Light</b>		<b>DMV</b> 120-277V Multivolt 0-10V Dimmable			
		Only available for down light		<b>4 ft.</b>		<b>SDMV</b> Step dimming Multivolt			
		Snap-in frosted acrylic lens (85% transmission) Special for LEDs.	<b>26</b>	26 Watts	1670 Lumens	<b>DHV</b> 347-480VAC 0-10V Dimming			
		(Only available for uplight & downlight)	<b>38</b>	38 Watts	2260 Lumens	<b>D347V</b> 347VAC 0-10V Dimming			
			<b>45</b>	45 Watts	2510 Lumens	<b>D120</b> Triac Dimming 120VAC			
						<b>D277</b> Triac Dimming 277VAC			
						<b>Options</b>			
			<b>52</b>	52 Watts	2900 Lumens	<b>HC301WH</b> Cable kit with 4' cable & power feed			
			<b>76</b>	76 Watts	3940 Lumens	Cable incl. w/white canopy			
			<b>90</b>	90 Watts	4410 Lumens	<b>HC301WH5W</b> Cable kit with 4' cable & power feed			
						0-10V Dimming			
						Cable incl. w/white canopy (5 wire)			
			<b>1 Up &amp; 2 Down Only</b>			<b>HC302WH</b> Cable kit with 12' cable & power feed			
						Cable incl. w/white canopy			
			<b>36</b>	36 Watts	820U-990D	<b>HC302WH5W</b> Cable kit with 12' cable & power feed			
			<b>54</b>	54 Watts	1205U-1455D	0-10V Dimming. Cable incl. w/white canopy (5 wire)			
						<b>2SCS24WH</b> Two stem kits w/24" stem, canopy & mounting hardware for 4' fixture			
						<b>Plug in Options</b>			
			<b>72</b>	72 Watts	1640U-1980D	<b>PI1</b> 3 wire harness, including white, black and green			
			<b>108</b>	108 Watts	2410U-2910D	<b>PI2</b> 4 wire harness, including white, black, green and blue for emergency backup			
						<b>PI3D</b> 5 wire harness, including white, black, green, violet and gray			



Specifications Subject To Change Without Notice