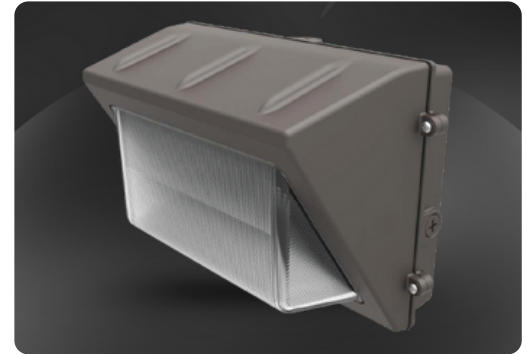


Project	
Type	
Catalog #	

### Overview

- Traditional 80W
- 120-277V Input



### Standard



## PRODUCT FEATURES

- Traditional design matches appearance and light distribution pattern of legacy HID, optimized for one-for-one replacements
- Heavy-duty, die-cast aluminum housing with (5) available 1/2" threaded conduit hubs: (1) on back and (1) on all four sides
- Powered by 0-10V dimming LED drivers
- CCT Adjustable: 3000K, 4000K, 5000K
- Built-in dusk-to-dawn photocell behind translucent 3/4" threaded plug with anti-yellowing agent
- Borosilicate glass lens diffuses light source and provides uniform distribution
- Covers footprint of large HID wallpacks
- Ambient operating temperature: -40°C/-40°F to 50°C/122°F
- UL listed for wet locations, IP65
- 0-10V dimming, 10% min
- Power Factor: >0.95
- THD: <20%
- LED chip lifetime: L70 >100,000 hrs @ 25°C/77°F ambient fixture temp
- Meets FCC Part 15, Part B, Class A standards for conducted and radiated emissions
- Fixture impact rating IK06
- Compatible with LED Emergency Backups

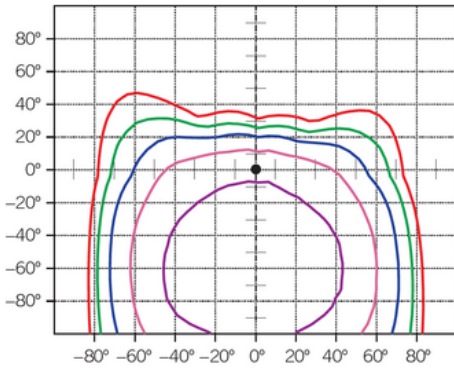
## ELECTRICAL SPECIFICATIONS

Catalog Number	Wattage	Lumens	Lumens Below 90°	Dimming	CCT*	Efficacy	CRI	Housing Color	Input Voltage	Rated Life	Legacy Equivalent
WP-R-LED-80W-SCT3	80W	10,955 lm	9,860 lm	0-10V	3000K	137 lm/W	>80	Bronze	120-277V	50,000 hrs	250-320W MH
		11,925 lm	10,730 lm		4000K	149 lm/W					
		11,360 lm	10,225 lm		5000K	142 lm/W					

\* Color Uniformity: CCT (Correlated Color Temperature) range as per guidelines outlined in ANSI C78.377-2017

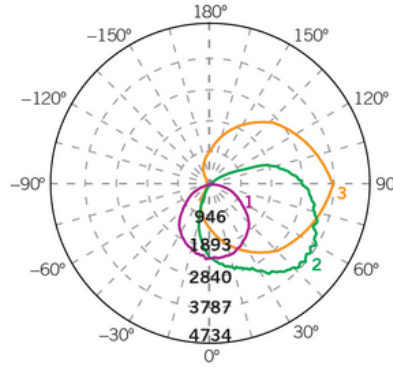
## PHOTOMETRIC SPECIFICATIONS

### ISOCANDELA PLOT



- Cd: 379 (10%)
- Cd: 606 (16%)
- Cd: 947 (25%)
- Cd: 1,515 (40%)
- Cd: 2,386 (63%)
- Cd: 3,788 (100%)

### LUMINOUS INTENSITY DISTRIBUTION



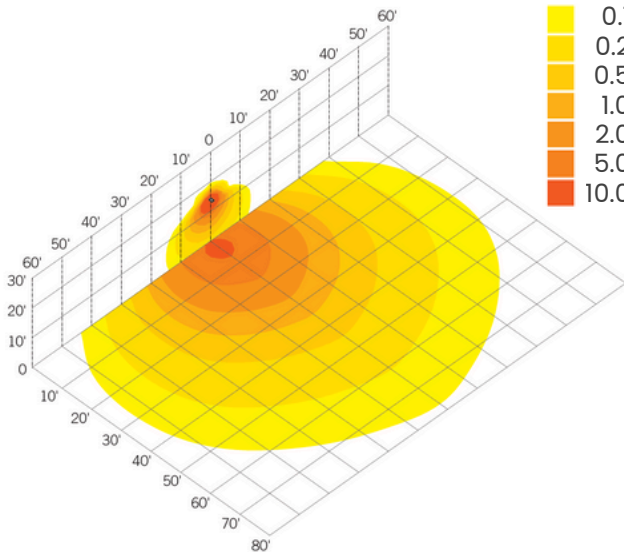
Average diffuse angle (50%): **111.4°**  
**1 Violet** C0 - C180  
**2 Green** C90 - C270  
**3 Orange** G51  
 Unit: cd

### FLUX DISTRIBUTION

Zone	Lumens	% Luminaire
<b>Forward Light</b>	8,671 lm	79.6%
0°-30°	1,281 lm	11.8%
30°-60°	3,696 lm	33.9%
60°-80°	2,660 lm	24.4%
80°-90°	1,035 lm	9.5%
<b>Back Light</b>	1,029 lm	9.5%
0°-30°	409 lm	3.8%
30°-60°	471 lm	4.3%
60°-80°	126 lm	1.2%
80°-90°	23 lm	0.2%
<b>Up Light</b>	1,195 lm	11.0%
90°-100°	551 lm	5.1%
100°-180°	644 lm	5.9%
<b>BUG* Rating</b>		
<b>Asymmetrical Luminaire Types</b>		
Type I, II, III, IV	B1 U4 G5	
<b>Quadrilateral Symmetrical Luminaire Types</b>		
Type V, Area Light	B1 U4 G5	

\* Backlight, Uplight, Glare

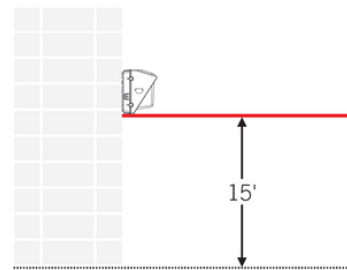
### LIGHT DISTRIBUTION PATTERN



- 0.1 fc
- 0.2 fc
- 0.5 fc
- 1.0 fc
- 2.0 fc
- 5.0 fc
- 10.0 fc

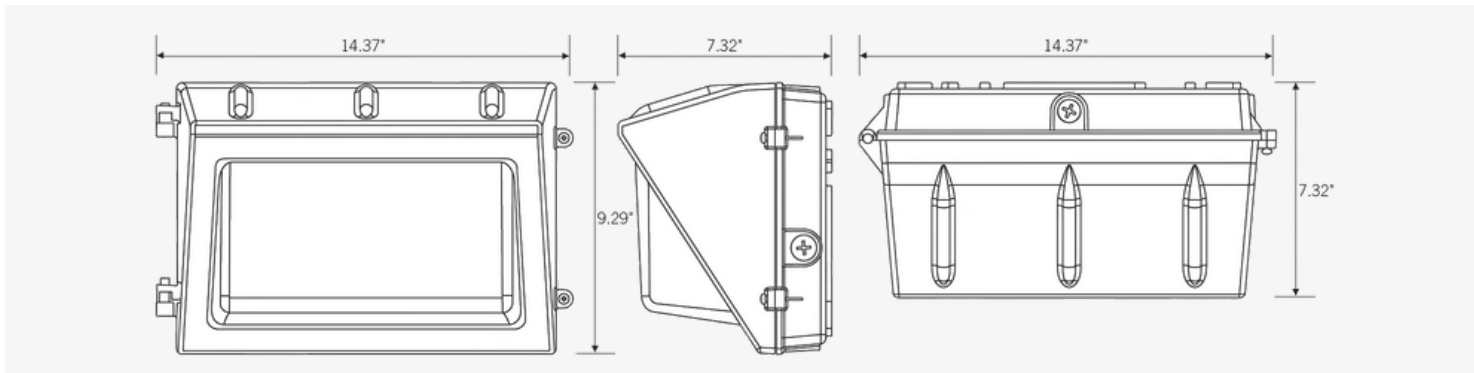
### MOUNTING

Side View



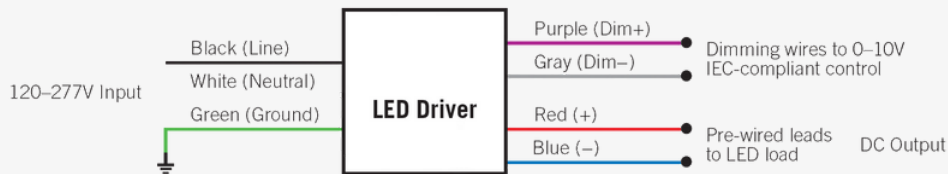
Isometric view from above; Luminaire mounted at 15'

## PHYSICAL SPECIFICATIONS



## GENERAL SETUP INSTRUCTIONS

### GENERAL WIRING DIAGRAM



**Caution:** Before installing, make certain that AC power to the fixture is off.

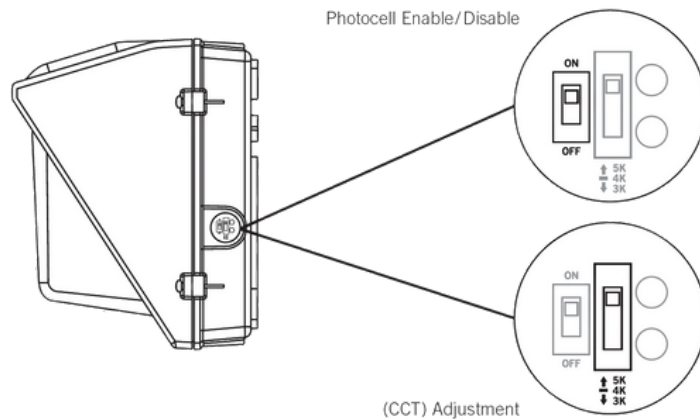
**Caution:** The electrical rating of this product is 120-277V. Installer must confirm that there is 120-277V at the fixture before installation.

### PHOTOCELL ENABLE / DISABLE

This fixture is equipped with a dusk-to-dawn photocell behind the translucent knock-out (KO) cover. Adjust the dip switch to enable (ON) or disable (OFF) the photocell function (see illustrations to the right). Fixture comes preset with photocell enabled unless otherwise noted.

### (CCT) ADJUSTMENT

This fixture is equipped with CCT Selection. There is an adjustable dip switch behind the translucent knock-out (KO) cover to change CCT between 5000K, 4000K, and 3000K (see illustrations to the right). Fixture comes preset at 5000K unless otherwise noted.



## ORDERING INFORMATION

Catalog Number	Pack QTY.	UPC
WP-R-LED-80W-SCT3	1	843654133591