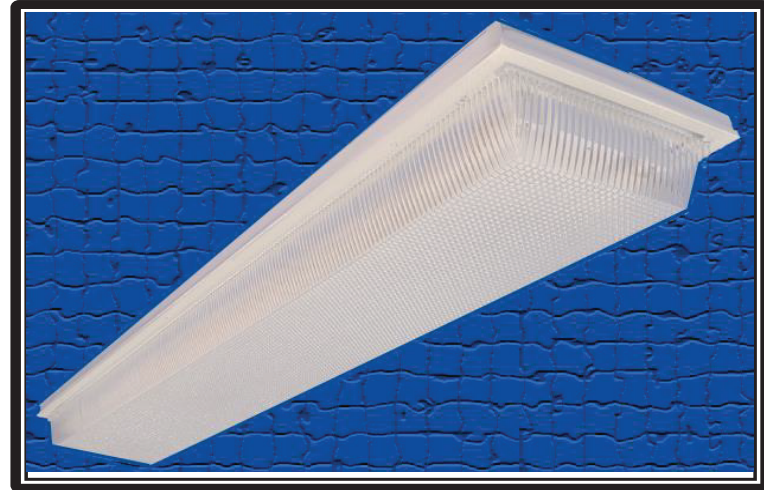


Vandal proof Security surface-mount

| | |
|------------|--|
| Project: | |
| Type: | |
| Catalog #: | |



STANDARD



This vandalproof covered channel is designed to protect the light source from any abuses such as severe impact and other forms of vandalism. Virtually indestructible, this UV stabilized polycarbonate enhanced prismatic design produces the best security lens on the market today.

Construction:

- Housing is designed from heavy gauge die formed steel is finished in a baked white enamel or polyester powder coating for maximum reflectivity and durability. Lens is vacuum formed clear polycarbonate with UV stabilizers. Neoprene gasket keeps fixture weatherproof when surface mounting. Spanner head screws are used to ensure tamper resistance.

Electrical

All units are furnished with UL Listed Class P thermally protected ballast. Other voltages are available upon request. Fixtures meet requirements for UL Luminaire Standard # 1598. All units comply with National Energy Standard. All units are UL certified damp location M 59006648

Mounting

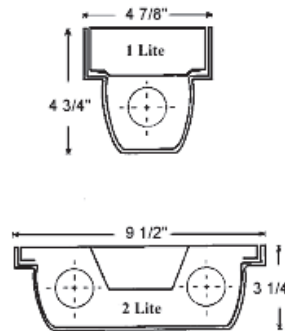
Knockouts are available for both surface and pendant mounting.

WARRANTY & LISTINGS

- 5-year warranty of all electronics and housing.
- UL Certified for damp location M 59006648



DIMENSIONS

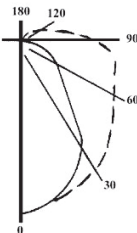


Fixture Length

| T12 | T12HO | T8 | T5 | T5HO | Length |
|--------|----------|-------|-------|---------|--------|
| F20T12 | --- | F17T8 | F14T5 | F24T5HO | 26" |
| F40T12 | F48T12HO | F32T8 | F28T5 | F54T5HO | 51" |

Coefficients Utilization Zonal Cavity Method

| RF | 20 | | | | | | | | | |
|----|-----|----|----|-----|----|----|-----|----|----|--|
| | 80% | | | 70% | | | 50% | | | |
| RC | 70 | 50 | 30 | 70 | 50 | 30 | 50 | 30 | 10 | |
| 1 | 58 | 55 | 52 | 56 | 53 | 50 | 50 | 47 | 45 | |
| 2 | 53 | 48 | 44 | 51 | 46 | 43 | 43 | 40 | 38 | |
| 3 | 49 | 43 | 38 | 47 | 41 | 37 | 39 | 35 | 37 | |
| 4 | 45 | 38 | 33 | 43 | 37 | 32 | 35 | 31 | 28 | |
| 5 | 41 | 34 | 29 | 40 | 33 | 29 | 31 | 27 | 24 | |
| 6 | 38 | 31 | 26 | 37 | 30 | 26 | 29 | 25 | 22 | |
| 7 | 36 | 28 | 23 | 34 | 27 | 23 | 26 | 22 | 19 | |
| 8 | 33 | 26 | 21 | 32 | 25 | 21 | 24 | 20 | 17 | |
| 9 | 31 | 23 | 19 | 30 | 23 | 19 | 22 | 18 | 15 | |
| 10 | 28 | 21 | 16 | 27 | 20 | 16 | 19 | 16 | 13 | |



max weight= 15lbs/51"

Ordering Guide

| Series | # of Lamps | Lamp Size | Ballast Type | Options |
|--------|---------------|--|--|--|
| VPC | 1 [MFA] [GMA] | <p>T8</p> <p>17 = F17V 32 = F32V</p> <p>T5</p> <p>14 = F14T5 28 = F28T5</p> <p>T12</p> <p>20 = F20T12 40 = F40T12</p> <p>T5HO</p> <p>24 = F24T5 54 = F54T5</p> | <p>120 = 120V</p> <p>MV = Multivolt</p> <p>E-LW = Electronic .77 BF</p> <p>E-O = Electronic 1.18 BF</p> <p>E-DIM = Dimming Unit</p> <p>SET LED N = Wired 1 end hot for LED tubes</p> <p>SET LED N/S = Wired 2 ends hot for LED tubes</p> <p>W/LEDIF = LED ballast driven tubes</p> | <p>EMBA [A] & [A] [A]</p> <p>2BAL [A] [A]</p> <p>REF-S = Silver Reflector</p> <p>OCC-I = Internal Occupancy Sensor</p> |