

## 1' x 4' & 2' x 4' Surface Mounted Unit

Project:	
Type:	
Catalog #:	



### STANDARD



This Surface mounted unit is ideal for use in commercial, residential, and institutional areas. Available in two, four, and six lamp, this unit offers a variety of light intensity and physical dimensions to fill your lighting needs.

### Construction:

- Housing is designed from heavy gauge die formed steel and finished in a baked white enamel for maximum reflectivity and durability. Hinged steel door frame with mitered corners come with slide latches which allow for easy relamping and maintenance. Lens is clear non yellowing acrylic with prismatic #12 pattern for even light distribution. Lens options are available upon request.

### Electrical

All units are furnished with UL Listed Class P thermally protected ballast. Other voltages are available upon request. Fixtures meet requirements for UL Luminaire Standard # 1598. All units comply with National Energy Standard. All units are UL certified damp location M 59006648

### Mounting

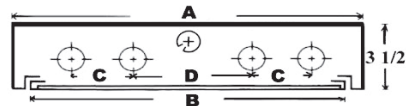
Unit is equipped with knockouts and holes for pendant or surface mounting. Knockouts in ends enable fixture to be mounted in a continuous run.

### WARRANTY & LISTINGS

- 5-year warranty of all electronics and housing.
- UL Certified for damp location M 59006648



### DIMENSIONS



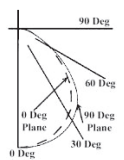
Fixture	Fixture Width	
	A	B
1x4	12 3/8"	11 1/4"
2X2 & 2X4	24 3/8"	23 1/4"

Fixture	Bulb Spacing		
	2 Lite	3 Lite	4 Lite
1x4	7	2 1/4"	2 1/4"
2x2 & 2x4	11	3 2/3"	5 1/2"

Coefficients Utilization Zonal Cavity Method

RF	20											
	80%				70%				50%			
RC	70	50	30	10	70	50	30	10	50	30	10	
RW	0	80	80	80	79	79	79	79	75	75	75	
	1	75	72	69	67	73	70	68	66	67	66	
	2	69	64	60	57	67	63	59	56	60	57	
	3	64	57	52	49	62	56	52	48	54	51	
	4	59	51	46	42	57	51	46	42	49	45	
	5	54	46	40	36	53	45	40	36	44	39	
	6	50	41	36	32	49	41	35	32	40	35	
	7	46	37	32	28	45	37	32	28	36	31	
	8	42	34	28	24	41	33	28	24	32	27	
	9	39	30	25	21	38	30	24	21	29	24	
	10	36	27	22	19	35	27	22	19	26	22	

### Photometric Curve



max weight= 40lbs/48"

### Ordering Guide

Series	# of Lamps	Lamp Size	Ballast Type	Options
161 = 1'x4' 261 = 2'x4'	1 = 1 lamp 2 = 2 lamp 3 = 3 lamp 4 = 4 lam 6 = 6 lamp (2x4 only)	<b>T8</b> 17 = 24" 32 = 48"  <b>T12</b> 20 = 24" 40 = 48"  <b>ULAMP/BiAx</b> 31U = 1.5" ULAMP T8 32U6 = 6" ULAMP T8 40U6 = 6" ULAMP T12 40BX= F40BX	<b>MV</b> = Multivol E-LW = Electronic .77 BF E-O = Electronic 1.18 BF E-DIM = Dimming Unit  <b>SET LED N</b> = Wired 1 end hot for LED tubes <b>SET LED N/S</b> = Wired 2 ends hot for LED tubes <b>W/LEDIF</b> = LED ballast driven tubes	<b>EMB</b> = Emergency Ballast <b>DD</b> = Acrylic Deep Dish Lens <b>EG</b> = 1/2" White Egg Crate Louver <b>SIL</b> = 3/4" Silver Parabolic Louver <b>SIL2</b> = 1 1/2" Silver Para. Louver  .125 = .125 thick lens <b>Flat WH</b> = Flat white lens <b>REF</b> = mirrored aluminum reflector <b>2BAL</b> = 2 BALLAST <b>STEM-XX</b> = stem and canopy mounting ( xx = length of stem in inches)