

## 1' x 4' & 2' x 4' Surface Mounted Unit

Project:	
Type:	
Catalog #:	



### STANDARD



This Surface mounted unit is ideal for use in commercial, residential, and institutional areas. Available in two, four, and six lamp, this unit offers a variety of light intensity and physical dimensions to fill your lighting needs.

### Construction:

- Housing is designed from heavy gauge die formed steel and finished in a baked white enamel for maximum reflectivity and durability. Hinged steel door frame with mitered corners come with slide latches which allow for easy relamping and maintenance. Lens is clear non yellowing acrylic with prismatic #12 pattern for even light distribution. Lens options are available upon request.

### Electrical

All units are furnished with UL Listed Class P thermally protected ballast. Other voltages are available upon request. Fixtures meet requirements for UL Luminaire Standard # 1598. All units comply with National Energy Standard. All units are UL certified damp location

### Mounting

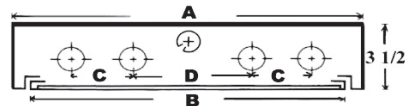
Unit is equipped with knockouts and holes for pendant or surface mounting. Knockouts in ends enable fixture to be mounted in a continuous run.

### WARRANTY & LISTINGS

- 5-year warranty of all electronics and housing.
- UL Certified for damp location



### DIMENSIONS



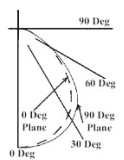
Fixture	Fixture Width	
	A	B
1x4	12 3/8"	11 1/4"
2X2 & 2X4	24 3/8"	23 1/4"

Fixture	Bulb Spacing		
	2 Lite	3 Lite	4 Lite
1x4	7	2 1/4"	2 1/4"
2x2 & 2x4	11	3 2/3"	5 1/2"

Coefficients Utilization Zonal Cavity Method

RC	20											
	80%				70%				50%			
RW	70	50	30	10	70	50	30	10	50	30	10	
0	80	80	80	80	79	79	79	79	75	75	75	
1	75	72	69	67	73	70	68	66	67	66	64	
2	69	64	60	57	67	63	59	56	60	57	55	
3	64	57	52	49	62	56	52	48	54	51	47	
4	59	51	46	42	57	51	46	42	49	45	41	
5	54	46	40	36	53	45	40	36	44	39	36	
6	50	41	36	32	49	41	35	32	40	35	31	
7	46	37	32	28	45	37	32	28	36	31	27	
8	42	34	28	24	41	33	28	24	32	27	24	
9	39	30	25	21	38	30	24	21	29	24	21	
10	36	27	22	19	35	27	22	19	26	22	18	

### Photometric Curve



max weight= 40lbs/48"

### Ordering Guide

#### 161 LED

#### Series

161 LED= 1'x4'  
261 LED = 2'X2  
2'x4'

#### Size

14 = 1X4  
22 = 2X2  
24 = 2X4

#### Lumens

**1X4 & 2X4**  
3220 (17W)  
4480 (24W)  
5705 (30W)  
6910 (37W)  
8640 (48W)  
11797 (70W)

#### Color

3K  
35K  
4K  
5K

#### Options

EMB = Emergency Ballast  
DD = Acrylic Deep Dish Lens  
EG = 1/2" White Egg Crate Louver  
SIL = 3/4" Silver Parabolic Louver  
SIL2 = 1 1/2" Silver Para. Louver  
.125 = .125 thick lens  
Flat WH = Flat white lens  
REF = mirrored aluminum reflector  
FR = Frosted Lens over LED Board

\*0-10v low voltage dimming standard per fixture

\*Higher and custom lumen packages available upon request

**2X2**  
3166 (17W)  
4350 (24W)  
5470 (31W)  
6452 (39W)