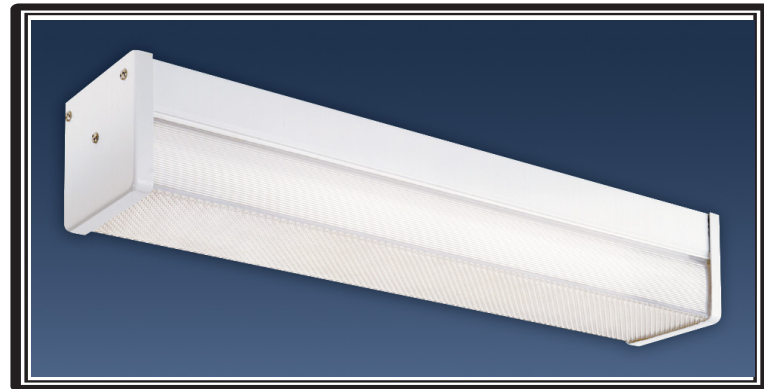


Vandal Resistant Wall Unit

Project:	
Type:	
Catalog #:	



STANDARD



This vandal proof covered wall unit is designed to provide maximum lumen output in areas such as hallways, bathrooms, kitchens, stairways, and hospitals as well as high abuse areas. An assortment of options allows this utility wall and surface mounted unit to satisfy a variety of lighting needs.

Construction:

- Housing is designed from heavy gauge die formed steel and finished in either baked white enamel or polyester powder coating. Socket plate is riveted to housing adding to the structural support of the fixture. Lens is .125 prismatic polycarbonate lens. The ends are held by tamper resistant screws.

Electrical

All units are furnished with UL Listed Class P thermally protected ballast. Other voltages are available upon request. Fixtures meet requirements for UL Luminaire Standard # 1598. All units comply with National Energy Standard. All units are UL certified damp location M 59006648

Mounting

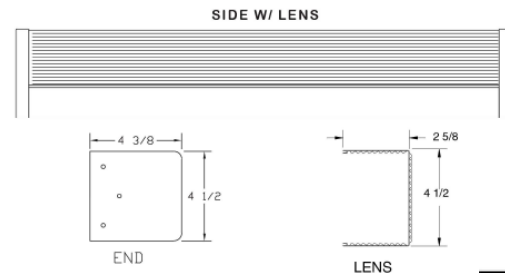
Unit is equipped with holes and 7/8" knockouts in housing for surface mounting. Fixture may be mounted individually or with optional joiner bands may be used in a continuous run.

WARRANTY & LISTINGS

- 5-year warranty of all electronics and housing.
- UL Certified for damp location



DIMENSIONS



LED	
SIZE	LENGTH
20w	24-1/4
28w	46-1/4
40w	48-1/4

Ordering Guide

Max weight = 12lbs / 48"

558 - LED

Series
558- LED

Size

- 18 = 18"
- 2 = 2FT
- 3 = 3FT
- 4 = 4FT

Lumens

- 2FT
- 3166 (17W)
- 4350 (24W)
- 5470 (31W)
- 6452 (39W)

Color

- 3K
- 35K
- 4K
- 5K

Options

- EMBMA = { ^!*\^ } & ^{ } ^{ }
- REFS = Silver Reflector
- OCC-E = External Occupancy Sensor
- OCC-I = Internal Occupancy sensor
- BI-LEV= Bi-level dimming system
- O = grounded outlet
- TOG = Toggle Switch
- PULL= Pull chain switch
- NL= Night Light
- 3WAY= 3 way system
- PRIS = Prismatic lens
- DL= Down light only
- POLY= Polycarb lens
- FR= Frosted lens over LED boards

*\$!%j ~ck 'j c' hU[Y'X]a a]b['ghUbXU'X'dYf' zI li fY

*<][\ Yf'UbX'W grca ""i a Yb'dUW_U[Yg' Uj Uj'UV'Yi dcb'fYei Ygh

*Call Factory for lumen options of 18" and 3FT models

- 4FT
- 3220 (17W)
- 4480 (24W)
- 5705 (30W)
- 6910 (37W)
- 8640 (48W)
- 11797 (70W)