

Project	
Type	
Catalog #	

## Applications

A recessed linear 4x4 fixture for distinctive architectural lighting plans. Ideal for corridors, lobbies and office areas, 4x4 Series fixtures can be installed individually or in a continuous run.

Specifically designed for direct/indirect lighting with snap-in lens to hide the LED arrays. Ideal where downlight and uplight are required.

Fixtures can be recessed in sheet rock or drop ceiling.



## Standard



## CONSTRUCTION

Die-formed and welded 22 gauge cold rolled steel. Knockouts on ends allow continuous wireway mounting. Housing is specially designed for direct/indirect lighting. Fixture accepts various lenses or louvers. 4' and 8' units have a steel mullion to join two individual diffusers. Snap in lens is ideal for uplight.

## ELECTRICAL

All units are furnished with UL Listed Class P thermally protected led drivers. Other voltages are available upon request. Fixtures meet requirements for UL Luminaire Standard # 1598. All units comply with National Energy Standard. All units are UL certified damp location. Operates at a voltage of 120-277 (public spaces) with input voltage fluctuations of plus/minus 10 percent.

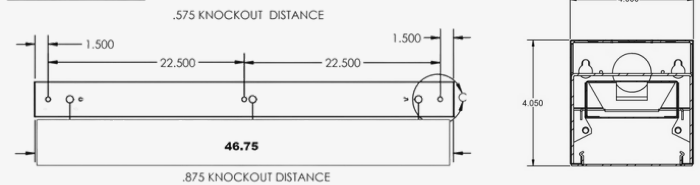
- Power Factor (PF) greater than or equal to 0.90 at full input power and across specified dimming range.
- Maximum Total Harmonic Distortion (THD) less than 20 percent at full input power and across specified dimming range.
- Operates for at least 50,000 hours at maximum case temperature and 90percent non-condensing relative humidity.
- Withstands Category A surges of 4 kV without impairment performance.
- Integral thermal protection that reduces the output power to protect the driver and light source from damage if the case temperature approaches or exceeds the driver's maximum operating temperature.
- 47 CFR 15. Complies with the requirements of the Federal Communications Commission (FCC) rules and regulations, Non-Consumer (Class A) for EMI/RFI (conducted and radiated).
- Class A sound rating.
- Restriction of Hazardous Substances (RoHS) compliant.

## WARRANTY & LISTINGS

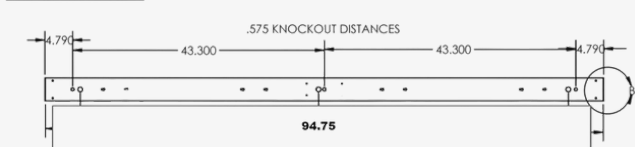
- 5-year warranty of all electronics and housing.
- UL Certified for damp location
- 50,000 hours of L70 LED Life
- CRI >80 (>90 AVAILABLE UPON REQUEST)

## DIMENSIONS

### 4FT Dimensions



### 8FT Dimensions



## ORDERING GUIDE

For uplight/downlight option, uplight lumens will mimic down lumens, double the wattage

\*\* Custom shapes and continuous runs are available upon request

\*\*\* Custom lumen packages available upon request

**SPECS SUBJECT TO CHANGE WITHOUT NOTICE**

Series	Size	Distribution	Lumens	Voltage	Finish	Color Temp
<b>LRDCF44</b> Drop Ceiling Flanged	<b>24</b> = 22.75 in <b>36</b> = 34.75 in <b>48</b> = 46.75 in <b>54</b> = 94.75 in <b>XX</b> = Custom length	<b>D</b> Downlight	<b>2FT</b> 3166 (17W) 4350 (24W) 5470 (31W) 6452 (39W)	<b>DMV</b> 120-277V Multivolt 0-10V Dimmable	<b>WH</b> - White <b>XX</b> - Custom color	<b>30K</b> - 3000K <b>35K</b> - 3500K <b>40K</b> - 4000K <b>50K</b> - 5000K
<b>LRDWF44</b> Drywall Flanged			<b>8FT</b> 5705 (30W) 6910 (37W) 8640 (48W) 11797 (70W)	<b>D120</b> Triac Dimming - 120 VAC		
<b>LRDWT44</b> Drywall Trimless			<b>4FT</b> 3220 (17W) 4480 (24W) 5705 (30W) 6910 (37W) 8640 (48W) 11797 (70W)			
<b>LRDWMK44</b> Drywall Mud Kit						
<b>LRSG44</b> Linear Recessed Slot Grid						
	<b>Options</b>					
	<b>EM 5</b> 5w Emergency battery back up					
	<b>EM 12</b> 12w Emergency battery back up					

**EXAMPLE: LRDCF44-48-D-4480-DMV-WH-3K**

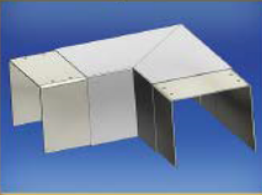
Project	
Type	
Catalog #	

## DIMENSIONS

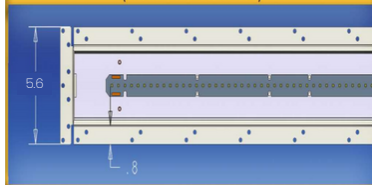
Joiner Band/Support Bracket  
Allows Continuous Runs



90° Joiner Allows Square  
and Rectangle Assemblies



Galvanized Mud Kits  
(Shown from bottom view)



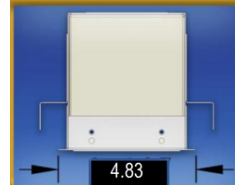
LRDWMK44

Trim/Flange Kits  
(Custom Kits Available)



LRDWF44

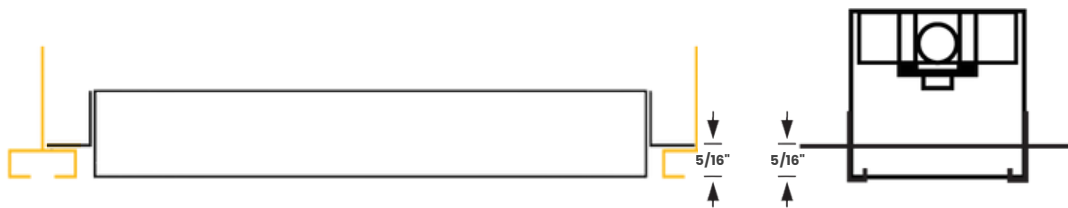
T-Grid P.P.W. (4")



LRDCF44



LRDWT44



LRSG44