

Project:	
Type:	
Catalog #:	

### STANDARD



This vandalproof covered channel is designed to protect the light source from any abuses such as severe impact and other forms of vandalism. Virtually indestructible, this UV stabilized polycarbonate enhanced prismatic design produces the best security lens on the market today.

### Construction:

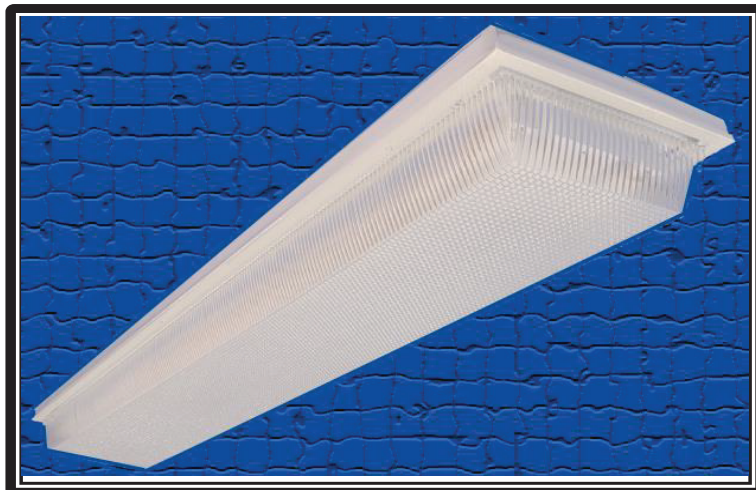
- Housing is designed from heavy gauge die formed steel is finished in a baked white enamel or polyester powder coating for maximum reflectivity and durability. Lens is vacuum formed clear polycarbonate with UV stabilizers. Neoprene gasket keeps fixture weatherproof when surface mounting. Spanner head screws are used to ensure tamper resistance.

### Electrical

All units are furnished with UL Listed Class P thermally protected ballast. Other voltages are available upon request. Fixtures meet requirements for UL Luminaire Standard # 1598. All units comply with National Energy Standard. All units are UL certified damp location

### Mounting

Knockouts are available for both surface and pendant mounting.

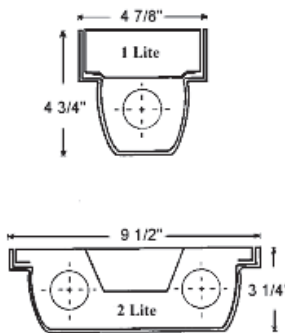


### WARRANTY & LISTINGS

- 5-year warranty of all electronics and housing.
- UL Certified for damp location



### DIMENSIONS



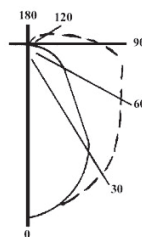
max weight= 15lbs/51"

Fixture Length

T12	T12HO	T8	T5	T5HO	Length
F20T12	---	F17T8	F14T5	F24T5HO	26"
F40T12	F48T12HO	F32T8	F28T5	F54T5HO	51"

Coefficients Utilization Zonal Cavity Method

RF	20									
	80%			70%			50%			
RC	70	50	30	70	50	30	50	30	10	
1	58	55	52	56	53	50	50	47	45	
2	53	48	44	51	46	43	43	40	38	
3	49	43	38	47	41	37	39	35	37	
4	45	38	33	43	37	32	35	31	28	
5	41	34	29	40	33	29	31	27	24	
6	38	31	26	37	30	26	29	25	22	
7	36	28	23	34	27	23	26	22	19	
8	33	26	21	32	25	21	24	20	17	
9	31	23	19	30	23	19	22	18	15	
10	28	21	16	27	20	16	19	16	13	



### Ordering Guide

#### VPC LED

#### Series

VPC LED

#### Size

2 = 2FT  
4 = 4FT

#### Lumens

**2FT**  
3166 (17W)  
4350 (24W)  
5470 (31W)  
6452 (39W)

#### Color

3K  
35K  
4K  
5K

#### Options

EMBM = Silver Reflector  
REF-S = Silver Reflector  
OCC-I = Internal Occupancy Sensor  
FR = Frosted Lens over LED Board

\*\$!%\$j ~ck 'j c'lu Y'X]a a ]b[ 'gHubXUX'dYf'  
Zl li fY

\*<][ \ Yf'UbX'W glca ~i a Yb'dUW\_U' Yg'  
Uj Uj'U'Y'i dcb'fYei Ygh

**4FT**  
3220 (17W)  
4480 (24W)  
5705 (30W)  
6910 (37W)  
8640 (48W)  
11797 (70W)