

Project	
Type	
Catalog #	

Overview

This covered wall unit is designed to provide maximum lumen output in areas such as hallways, bathrooms, kitchens, stairways, and hospitals.

An assortment of options allows this utility wall-and-surface-mounted unit to satisfy a variety of lighting needs.



Standard



CONSTRUCTION

Housing is designed from heavy gauge die formed steel and finished in either baked white enamel or polyester powder coating. Socket plate is riveted to housing, adding to the structural support of the fixture. Lens is extruded white acrylic. End plates are attached by acorn nuts and secure the lens to the fixture.

ELECTRICAL

All units are furnished with UL Listed Class P thermally protected LED drivers. Other voltages are available upon request. Fixtures meet requirements for UL Luminaire Standard # 1598. All units comply with National Energy Standard. All units are UL certified damp location. Operates at a voltage of 120-277 (public spaces) with input voltage fluctuations of plus/minus 10 percent.

- Power Factor (PF) greater than or equal to 0.90 at full input power and across specified dimming range.
- Maximum Total Harmonic Distortion (THD) less than 20 percent at full input power and across specified dimming range.
- Operates for at least 50,000 hours at maximum case temperature and 90percent non-condensing relative humidity.
- Withstands Category A surges of 4 kV without impairment performance.
- Integral thermal protection that reduces the output power to protect the driver and light source from damage if the case temperature approaches or exceeds the driver's maximum operating temperature.
- 47 CFR 15. Complies with the requirements of the Federal Communications Commission (FCC) rules and regulations, Non-Consumer (Class A) for EMI/RFI (conducted and radiated).
- Class A sound rating.
- Restriction of Hazardous Substances (RoHS) compliant.

WARRANTY & LISTINGS

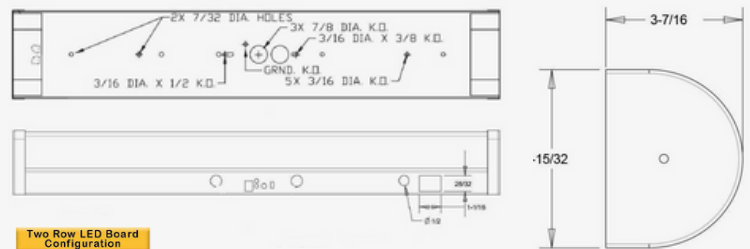
- 5-year warranty of all electronics and housing.
- UL Certified for damp location
- 50,000 hours of L70 LED Life
- CRI >80 (>90 AVAILABLE UPON REQUEST)

MOUNTING

Unit is equipped with holes and 7/8" knockouts in housing for surface mounting. Fixture may be mounted individually or with optional joiner bands. May be used in a continuous run.

DIMENSIONS

Max weight = 12lbs/48"



ORDERING GUIDE

	Series	Size	Lumens	Color Temp	Options	
* 0-10v low voltage dimming standard per fixture	202 LED	18" = 18" 2 = 2 FT 3 = 3 FT 4 = 4 FT	2 FT 3166 (17W) 4350 (24W) 5470 (31W) 6452 (39W)	30K - 3000K 35K - 3500K 40K - 4000K 50K - 5000K	EMER = Emergency driver REFS = Silver Reflector OCC-E = External Occupancy Sensor OCC-I = Internal Occupancy sensor BI-LEV = Bi-level dimming system O = Grounded outlet TOG = Toggle Switch PULL = Pull chain switch NL = Night Light 3WAY = 3 way system PRIS = Prismatic lens DL = Down light only POLY = Polycarb lens FR = Frosted lens over LED boards VP = Vandal Proof	
* Higher and custom lumen packages available upon request						
* Call Factory for lumen options of 18" and 3FT models						
				4 FT 3220 (17W) 4480 (24W) 5705 (30W) 6910 (37W) 8640 (48W) 11797 (70W)		